

**BOYSEN®**



The No. 1 PAINT

DECORe™

Classic



For technical reasons connected with color reproduction and paint manufacturing, the colors shown may not match the exact paint color.

# BOYSEN® DECORE™ CLASSIC

Is a unique, water-based decorative paint system that can simulate the complex texture and distinctive finish of the European masters right in your home. Unlike traditional faux finishes, this paint finish does not need elaborate intermixing of colors, layering techniques or sophisticated equipment. Simple and effortless brushing is all that's required to achieve this very exquisite finish. It is ideal for interior concrete walls, properly primed wood, and drywalls. Avoid using product on high friction areas like fixtures and furniture.

## SURFACE PREPARATION

### **New Concrete**

Allow new concrete to dry for 14-28 days under normal weather conditions before painting. Surface to be painted should be clean and dry, free from oil, grease, dust, dirt, contaminants, and all loose grit and mortar. If neutralizing, treat surface with a solution of 1 part BOYSEN Masonry Neutralizer B-44 diluted in 16 parts water, applying liberally by brush or roller. Let dry overnight before rinsing with water to remove white crystals that form on the surface. Let dry before painting. However, if the concrete has been cured for more than 28 days, there is no need for neutralizer.

### **Wooden Surfaces**

Surface to be painted should be clean and dry, free from dust, dirt, and other foreign matter. Hammer all nails deep enough to apply putty. Sand rough wood until smooth and then dust off before painting.

### **Drywall Substrates**

Install and secure joints as per manufacturer's recommendations.

### **Repainting**

Scrape off all loose, scaling, flaking, and peeling paint as necessary. Make sure the surface is clean, dry, and good weather persists prior to painting. For repainting concrete with chalky old paint, use BOYSEN Chalk Blocker B-7304 as surface conditioner. In case of mildew infestation, treat with a bleach solution (1:3, laundry bleach to water, respectively) by swabbing or brushing. To ensure proper treatment, let stand for 24 hours before cleaning off residue. Let dry.

For repainting other surfaces such as wood, apply the appropriate primer before recoating.

**For technical reasons connected with color reproduction and paint manufacturing, the colors shown may not match the exact paint color.**

## TECHNICAL DATA

	B-4605 Undercoat	B-4610 Base
Finish	Flat	Matte
Touch Dry	30 minutes	2 hours
Practical Coverage per 4-Liters	25 to 30 sqm	25 to 30 sqm
Tinting	Not applicable	Available toners can be added up to 200mL per 4-Liters of DECORe Base
Thinning Solvent	Strictly use as supplied.	
Clean-up Solvent	Water	
Packaging	4-Liters	4-Liters
Application	By brush or roller	DECORe brush and scraper



**For technical reasons connected with color reproduction and paint manufacturing, the colors shown may not match the exact paint color.**

# PAINTING SCHEDULE

1. Apply BOYSEN Permacoat Flat Latex B-701 as primer for concrete. For wood, use BOYSEN Flatwall Enamel B-800. After primer application, apply DECORE Undercoat B-4605 by brush or roller and fully cover the surface. Dry for 1 hour before applying the finishing layer.

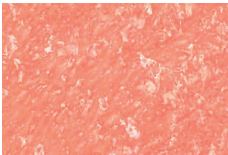
Note: The design can only be achieved using BOYSEN DECORE Undercoat.

2. After choosing the desired color, mix the DECORE Toner into DECORE Base B-4610. A color can be applied in different tones by varying amount of toner used (Full, One-half, One-fourth) or any other proportion depending on desired shade. Stir until uniform consistency is achieved. Do not thin mixture with water or any solvent.

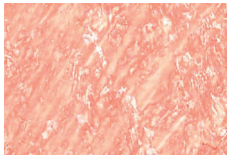
3. Using a BOYSEN DECORE brush, apply from top corner, working with short crisscrossing strokes. If a more uniform pattern is desired, brush through surface while the paint is still wet.

Note: The design may not be achieved if a different paint brush is used.

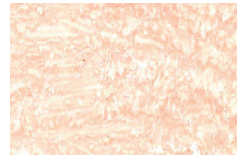
4. Wait for 8-10 minutes after applying BOYSEN DECORE. Then, lightly comb the surface using the plastic scraper with long crisscrossing strokes, the scraper inclined and close to the surface.



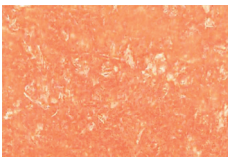
1 TONER B-4771  
Soft Red



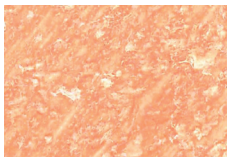
1/2 TONER B-4771  
Soft Red



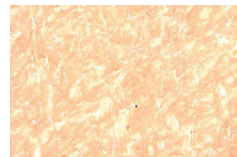
1/4 TONER B-4771  
Soft Red



1 TONER B-4763  
Bright Yellow



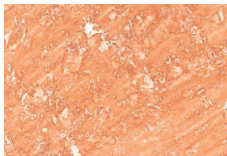
1/2 TONER B-4763  
Bright Yellow



1/4 TONER B-4763  
Bright Yellow



1 TONER B-4772  
Brick Red



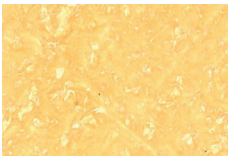
1/2 TONER B-4772  
Brick Red



1/4 TONER B-4772  
Brick Red

\*Due to technical reasons connected with ink-printing and color reproduction, swatches shown here may differ from the exact paint color. Always refer to actual paint color standards to confirm your color. Differences in applicator and color mixing may also affect the outcome of the applied paint.

**For technical reasons connected with color reproduction and paint manufacturing, the colors shown may not match the exact paint color.**



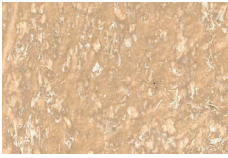
1 TONER B-4762  
Medium Yellow



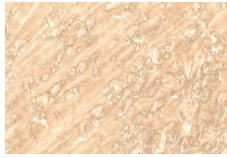
1/2 TONER B-4762  
Medium Yellow



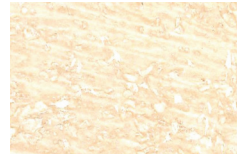
1/4 TONER B-4762  
Medium Yellow



1 TONER B-4780  
Brown



1/2 TONER B-4780  
Brown



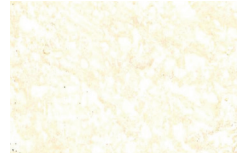
1/4 TONER B-4780  
Brown



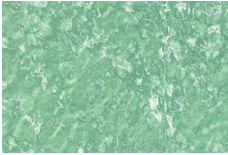
1 TONER B-4730  
Light Gray



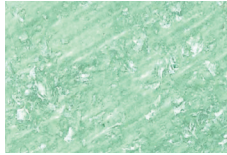
1/2 TONER B-4730  
Light Gray



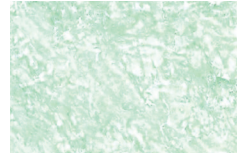
1/4 TONER B-4730  
Light Gray



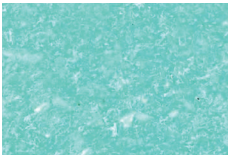
1 TONER B-4750  
Dark Green



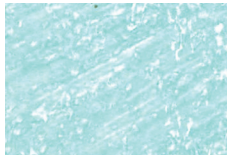
1/2 TONER B-4750  
Dark Green



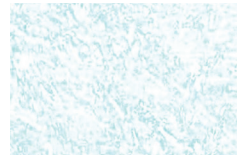
1/4 TONER B-4750  
Dark Green



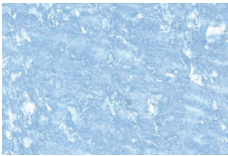
1 TONER B-4741  
Aqua Blue



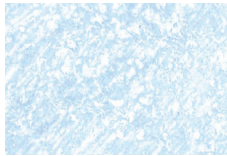
1/2 TONER B-4741  
Aqua Blue



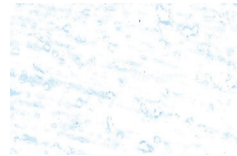
1/4 TONER B-4741  
Aqua Blue



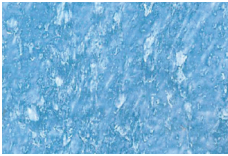
1 TONER B-4742  
Light Blue



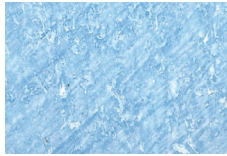
1/2 TONER B-4742  
Light Blue



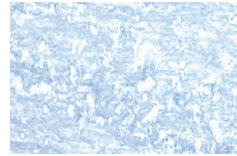
1/4 TONER B-4742  
Light Blue



1 TONER B-4743  
Deep Blue



1/2 TONER B-4743  
Deep Blue



1/4 TONER B-4743  
Deep Blue

**For technical reasons connected with color reproduction and paint manufacturing, the colors shown may not match the exact paint color.**

**BOYSEN®**



The No. 1 PAINT

**PACIFIC PAINT (BOYSEN) PHILIPPINES, INC.**

292 D. Tuazon Street, 1115 Quezon City  
Hotline: 8364-9999  
Tel Nos. 8364-3505 to 09; 8365-0561 to 64  
Fax Numbers: 8367-8881; 8361-7164  
[inquiry@boysen.com.ph](mailto:inquiry@boysen.com.ph)

THE  
**COLOR**  
LIBRARY

SP 241-242 2nd Level, IKEA Retail Integration  
South Parking Building, SM Mall of Asia, Pasay City 1300



Boysen Paints Philippines



Boysen Paints



Boysen Paints Phil



Blog: [myboysen.com](http://myboysen.com)



[studioboyesen.com](http://studioboyesen.com)



Boysen App



Boysen®, Boysen® Eagle symbol and Decore™ are registered trademarks of Pacific Paint (BOYSEN) Philippines, Inc.

**For technical reasons connected with color reproduction and paint manufacturing, the colors shown may not match the exact paint color.**